



FILISIA
CREATIVITY IN REHABILITATION

A woman with reddish-brown hair tied back, wearing a red shirt, is leaning over a table and touching a glowing orange circular sensor. A man with a beard, wearing a black shirt, is sitting behind her, looking on. On the table are several other similar circular sensors, some glowing pink and others white. A laptop is visible in the background.

Autism Education

“Monoma cultivates waiting, turn taking and listening skills. Tools that reinforce socialisation and communication are much needed and Monoma is fabulous for that”

Stavros Psaroudakis Psychologist &
special educator



Stroke
Rehabilitation

“We didn’t know Dimitri even had this range of motion!

He is so engaged this lets me evaluate his capacities and my own work in a whole new way.”

Calliope Lappa Athens University professor &
Occupational Therapist @ National Rehab Centre



Use it to

Train Cognitive Skills

Train Fine and Gross Motor Skills

Train Hand-Eye Coordination

Support Sensory Integration

Musical Expression, Memory

Games, Turn-Taking Interactions,

Logical Reasoning , Reaction to

Stimuli and Exergames.

Our Software

Designed with therapists

Modules for different conditions

Gamified rehabilitation exercises

Multiple difficulty levels

Collects and displays data on clients'
physical and cognitive abilities



Use it to

Connect to our rehabilitation
and training apps

Connect to Skype

Medication reminder

Access to phone/tablets for
people with motor difficulties

Connect to +100 apps through
IfTTT

Our Hardware

Connected device

Ergonomically designed for
people with motor difficulties

Unprecedented customisation

Dynamic sensitivity

Illuminates and can take any colour

Patent
Pending

Benefits



Recreational Tool

Strengthens the sense of accomplishment
Users can play together and socialise
Enables the musical expression



Cognitive Training Tool

Trains orientation, memory and attention
Supports sensory integration
Encourages reaction to stimuli



Physical Rehabilitation tool

Motivation to press, stretch and lift hands
Speed and width of movement
Supports hand-eye coordination



Evaluation Tool

Data on the speed, strength and endurance
Data on memory, reaction time,
turn-taking skills

Go to Market

Year 1-2

Conditions: Autism, Intellectual Disability, Cerebral Palsy

Cognitive training tool

Sales: B2B via Distributors

3500 care homes & schools

1,2M people

UK, b2b

Year 2-3

+Stroke, Brain Injury

Rehabilitation tool & data

Sales: Direct B2B,

200K care homes & schools

18M people

EU, b2b

Year 4-6

Conditions: Degenerative, Acquired, Congenital conditions and the elderly

Connected device

Sales: 3rd party, Distributors, Direct sales

150M people

EU, US b2b & b2c

Value of our system verified by 3 rehabilitation homes, 2 special schools, 70+ therapists.

“It can be used individually and definitely in groups of two or more. Tools that promote socialisation and teamwork are much needed and Monoma is just fabulous for that.”

Jess Carpenter Teacher at Birmingham special school

Care-homes

“I am very interested in what you showed us. Monoma a really exciting product, I can see it used in a number of different ways across our organisations.”

Catherine Managing Director of 12 care homes company

Resellers

“Inclusive Technology are interested in the switch you have designed. There are very few switches where the activation pressure is adjustable or where proportionate pressure can be utilised by software. Also the general look and feel of the switch is excellent and we like the way it illuminates.”

Martin Littler Assistive Technology Distributor

Georgios



**CEO, Interaction
Designer**

Irene



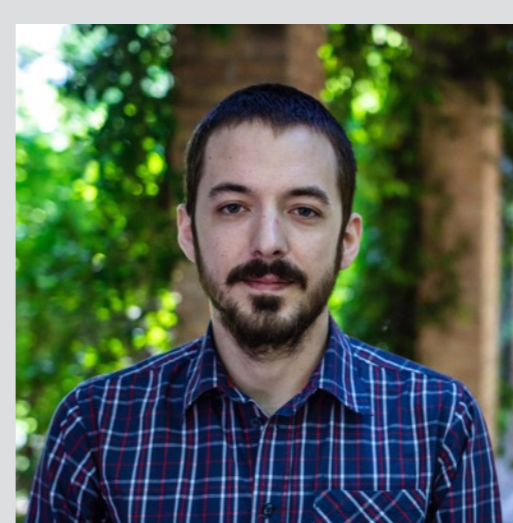
**Business
Development and
Operations**

Panos



**Data
Analytics**

Andrea



**Software Engineer,
Sound Designer**

George



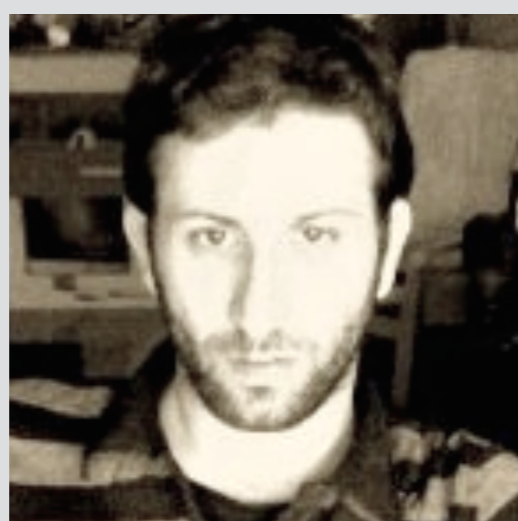
**Medical System
Mechanical Engineer**

Lila



Researcher

Dimitri



**Product
Development**

Markos



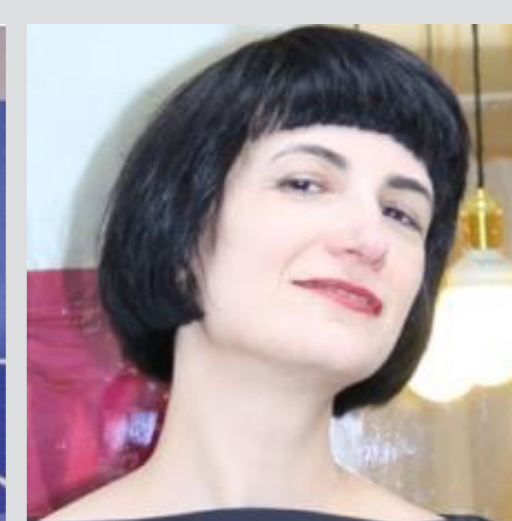
**Business
Development**

Barry



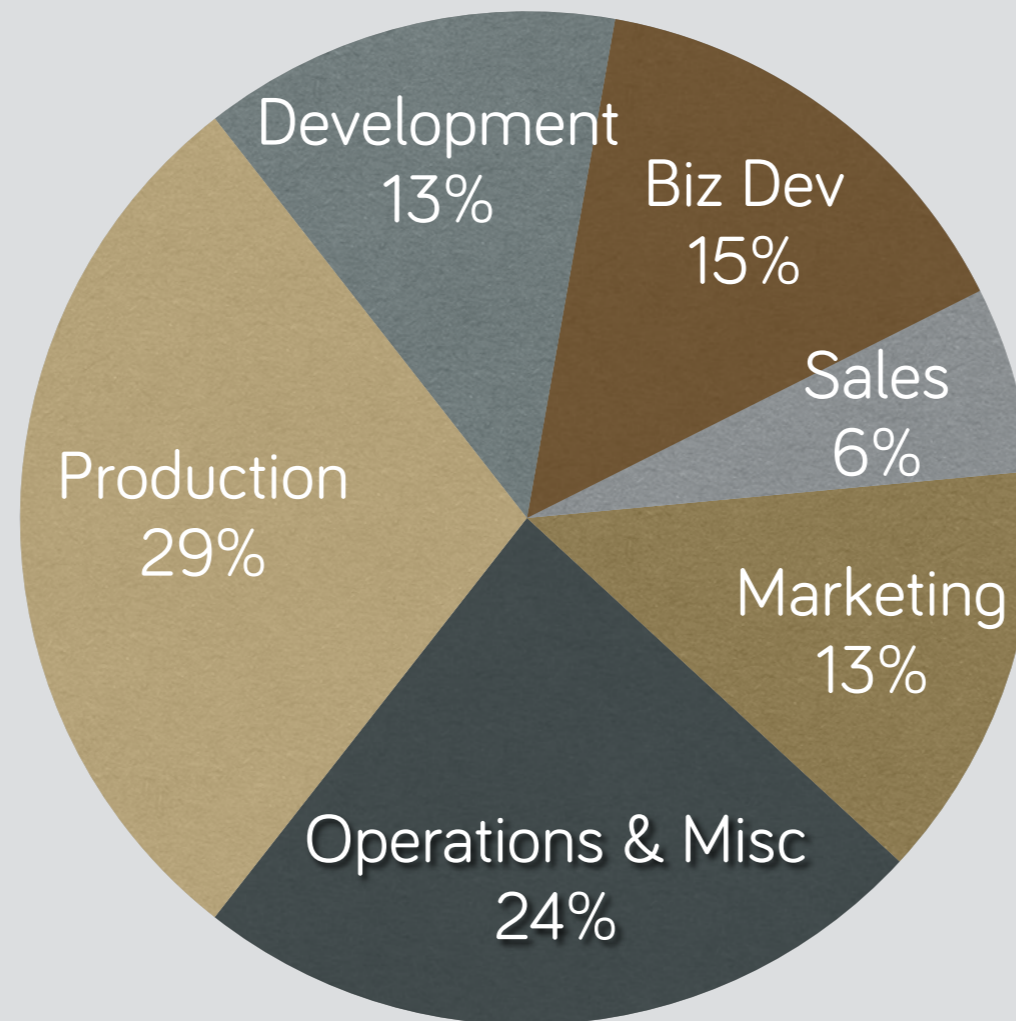
**Research
Management**

Iris



Marketing

Raising €150,000





FILISIA
CREATIVITY IN REHABILITATION

George Chountas

@_filisia

hello@filisia-interfaces.com

Awards



UKTI Sirius
programme



Stanford E-Bases
Bootcamp



Impact Hub
Social Impact Award



Clinton Global
Initiative



European Investment
Bank Social Innovation
Competition

Angelopoulos
Clinton GIU
Fellowship

Angelopoulos grant &
fellowship



Ashoka "Destination
Change" winners

Partners



University of
Birmingham



Business Acceleration



Testimonials

"It is a really useful tool. It supports reaction to stimuli, visual-motor coordination, the training of memory, orientation and attention. The dynamic sensor is so useful when working with different clients because it allows me to adapt its sensitivity. Customisation is the Holy Grail of occupational therapy. Congratulations!"

Alkis Ginatsis Occupational Therapist Cerebral Palsy

"Inclusive Technology are interested in the switch you have designed. There are very few switches where the activation pressure is adjustable or where proportionate pressure can be utilised by software. Also the general look and feel of the switch is excellent and we like the way it illuminates."

Martin Littler Assistive Technology Distributor

"Aris (student with cerebral palsy) loves music. He loves to use the device. Following the light cues on the units makes him enthusiastic, like playing a game. Aris made movements that I did not expect him to do and even spontaneously while using Monoma. During the musical improvisation game, I observed how he used his hand that usually he is not able to use – it came out automatically, because he liked the interaction and was thrilled!"

Eva Christodoulaki Physical Therapist

"The system helps the auditory coordination, visuomotor coordination and the training of the gross motor skills. § I really want to use the device outdoors – I try to work with clients' movements over longer distances and this system gives great incentives to do so. "

Strati Kalamvoki Physical Therapist

"I am very interested in what you showed us. Monoma a really exciting product, I can see it used in a number of different ways across our organisations."

Catherine Managing Director of 12 care homes company

"It can be used individually and definitely in groups of two or more. Tools that promote socialisation and teamwork are much needed and Monoma is just fabulous for that."

Stavros Psaroudakis Psychologist & teacher of autistic people

"We didn't know he (stroke survivor) even had this range of motion! He is so engaged and this lets me evaluate his capacities and my own work in a whole new way."

Calliope Lappa Athens University professor
& Occupational Therapist

"It is so difficult to engage Dan in learning - but look at him now - he is so responsive! Monoma cultivates waiting, turn taking and listening skills. The structure of the interactions promote sharing, which is so important for autistic people. I was amazed to watch how what teach in the class in transferable to other activities using Monoma"

Jess Carpenter Teacher at Birmingham special school

"It's really good and you can use it in so many different ways, I still can see the gentleman in the video trying to reach. This is brilliant!"

Martha Director of care home

"This is an important tool for teaching people with autism. Because of the participatory games, the kids have to communicate and share. It helps initiation, following and turn-taking, which are cornerstones of communication."

Lila Kossyvaki Lecturer at University of Birmingham & special educator

	IoT / connected device	Dynamic sensor	Cross platform	Clinical trial	Data on cognitive abilities	Data on physical abilities	Certification	Price
REHACOM				✓		✓	✓	£££
MUSIC GLOVE				✓	✓		✓	£££
BIOMETRICS		✓		✓	✓	✓	✓	££££
COGNIPLUS				✓	✓			£££
MEDITOUCH		✓		✓		✓	✓	£££
TYROMOTION		✓		✓	✓	✓	✓	££££
FILISIA	✓	✓	✓	Q1 2016	✓	✓	Q2 2016	££

Highly customisable + Interoperable = Scalable

Rich data analysis = Valuable Assessment Tool

Only Accessible connected device (IoT) with bidirectional communication

Differentiation

Technology

Opens new training and rehabilitation possibilities much needed by therapists

Price

Significantly better price compared to similar value systems

Accessible IoT

First ergonomically accessible connected device in a booming market

Data Analytics

Dynamic sensor enables data that were not possible before. Offers new insights to care takers, therapists, families and researchers.

Interaction	Type	Condition
Cause and Effect	Music	Autism
Memory Game	Game	Stroke, Brain Injury
Logical Reasoning	Game	Stroke, Brain Injury
Music Improvisation	Music	Autism, Cer. Palsy, Learning Diff.
Music Orchestration	Music	Autism, Learning Diff.
Turn Taking	Music	Autism
Story Telling	Educational	Cerebral Palsy, Learning Diff.
Colour Matching	Game	Autism
ExerGame	Game	Cer. Palsy, Stroke, Brain Injury